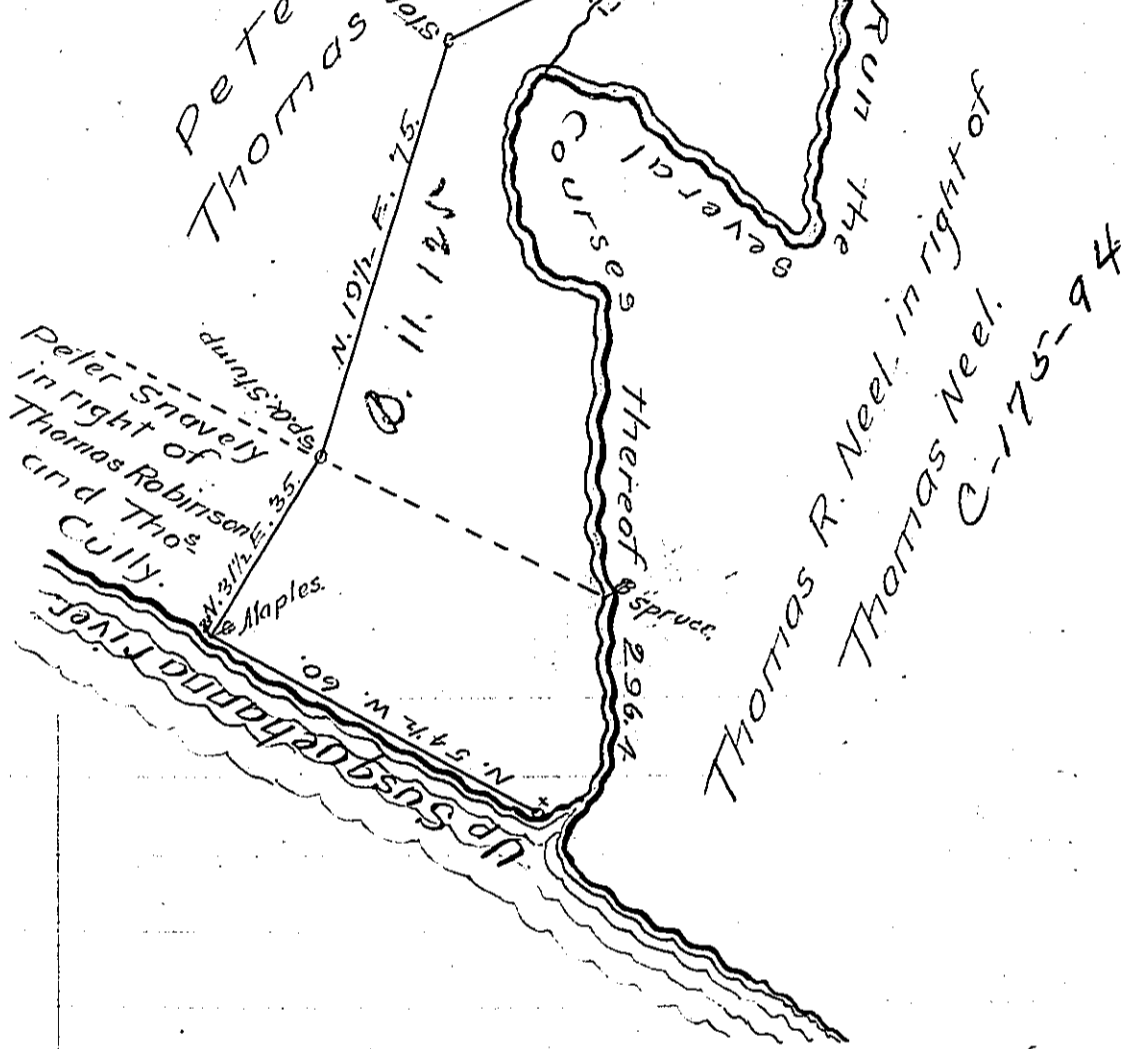


Note  
 This survey includes  
 3495 156 perches & alls.  
 surveyed and returned on a war-  
 rant dated July 24<sup>th</sup> 1860 granted  
 to John M. Amweg. C-184 - 104



Down Run.	
S. 62. W.	4.9 post
S. 12. W.	11.
S. 63 1/2. W.	8.2
N. 87. W.	9.5
N. 78. W.	11.3
N. 68 1/2. W.	6.
S. 80. W.	7.
S. 8. W.	18.3
S. 25 1/4. W.	9.6
South	7.6
S. 30. W.	6.
S. 9. E.	12.
N. 82 1/2. W.	4.
N. 38 3/4. W.	5.5
N. 57. W.	12.2
N. 78. W.	4.8
N. 54. W.	12.7
N. 68 1/2. W.	5.4
N. 45 1/2. W.	6.5
S. 56. W.	13.
S. 13 1/2. W.	20.3
S. 40 1/2. E.	16.
S. 8. E.	18.8
S. 27 1/4. W.	13.3
S. 18 1/2. E.	18 Spruce
S. 1 1/2. E.	11.1
S. 8 1/2. W.	8.
S. 7. E.	4.4
S. 63 1/2. W.	14.
296.4	

The above Draught represents a tract of land, situated partly in Drumore, and partly in Martic Township Lancaster County, containing 57 acres 54 perches & the usual allowance of six per Cent for Roads &c.

Surveyed November 15<sup>th</sup> 1860, in pursuance of a Warrant dated January 11<sup>th</sup> 1794 - granted to Thomas Neel.

To William H. Keim Esq. } by John C. Lewis Surveyor  
 Surveyor General - Pa. } for Lancaster County

IN TESTIMONY that the above is a copy of the original remaining on file in the Department of Internal Affairs of Pennsylvania, made conformably to an Act of Assembly approved the 16th day of February, 1833, I have hereunto set my Hand and caused the Seal of said Department to be affixed at Harrisburg, this twelfth day of July 1906.

*Loach Brown*  
 Secretary of Internal Affairs